

Jamestown + Mapping Primary Sources



Illustration by Steve Stankiewicz

GRADE LEVEL: Upper Elementary

STANDARDS AND SKILLS: Comparing and Contrasting, Making Connections, Using Information Resources, Questioning and Inquiry Skills

OVERVIEW: Captain John Smith created the first detailed English-language map of the Chesapeake Region. His map of Virginia, published in 1612, remained in use for seventy years by Europeans looking to explore, build settlements, and trade in the region. Smith made the map by traveling 2,500 miles of land in a series of short expeditions and had only basic mapmaking tools to work with. Native Americans gave Smith a great deal of the geographic and cultural information the he included on the map.

OBJECTIVE: Students will explore and analyze Smith's 1612 map using the graphic organizer and then compare it to a modern map online at

<https://www.nps.gov/cajo/smith-map-vs-modern-map.htm>

ESSENTIAL QUESTIONS: Why do students think Europeans like Smith made maps of North America? What does Smith's map tell us? How does it compare to a modern map of the area?



Source: <https://www.nps.gov/cajo/learn/smith-maps.htm>. Retrieved 02.02.22



42221
72-61472

CAPTAIN JOHN SMITH'S MAP OF VIRGINIA
1606.

Niles, B. L. & Co. Lithographers, Washington, D.C.

Map Division
3 - OCT 1958
Library of Congress

9386
1024
562
1904

Analyze a Map



Meet the map.

What do you see?

Does the map have a title?

Observe its parts.

Does the map include? Circle all that apply.

Are symbols or colors used in the legend? If so, what do they stand for?

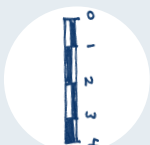
What place or places are on the map?



COMPASS ROSE



LEGEND



SCALE

What does the map show? Circle all that apply.



MOUNTAINS



RIVERS



LAKES



OCEANS



CITIES



STATES



COUNTRIES



ROADS



OTHER

Try to make sense of it.

When was the map drawn?

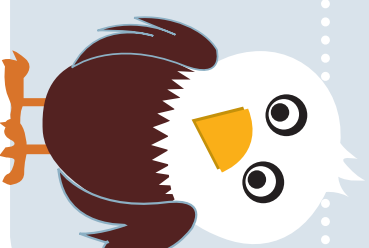
Why do you think this map was made?

List two parts of the map that tell you this.

How does it compare to a current map of the same place?

Use it as historical evidence.

Where do you think we could find out more information about the place or places shown on the map?



NATIONAL ARCHIVES